

GIS, only Easier

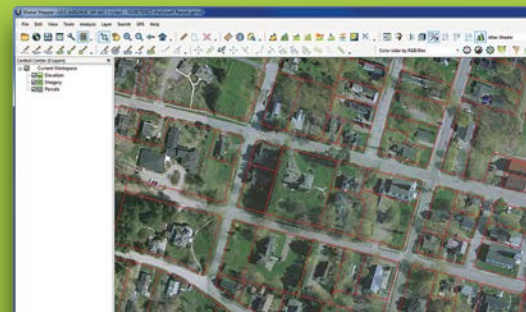
Global Mapper: GIS for Everyone

Global Mapper is a robust and inexpensive GIS application that combines a comprehensive array of spatial data processing tools with access to an unparalleled variety of data formats. Developed for both GIS professionals and map enthusiasts, this versatile software is equally well suited as a standalone GIS data management tool or as a complement to an established GIS infrastructure.

Global Mapper embodies virtually everything you need in a GIS: Complete interoperability with unparalleled data support; straightforward installation and setup; just the right balance of powerful data processing and ease of use; free and unlimited technical support; and genuinely affordable pricing.

SOFTWARE HIGHLIGHTS

- Supports 250+ file formats
- Free online data sources
- Lidar processing tools
- 3D rendering and elevation tools
- Batch file conversion
- Advanced analysis tools
- Volume calculation tools
- Terrain modification tools
- Drawing and digitizing tools
- GPS data management tools
- Support for scripting
- Geographic calculator integration
- Available in both 32 and 64 bit



Trusted by thousands of GIS professionals around the world, Global Mapper is used by companies in a variety of industries.

- | | |
|------------------------|-----------------|
| • Business development | • Utilities |
| • Mapping and charting | • Government |
| • Transportation | • Public safety |
| • Education | • Oil and gas |
| • Natural resources | • Defense |

Download a FREE trial

www.bluemarblegeo.com/global-mapper

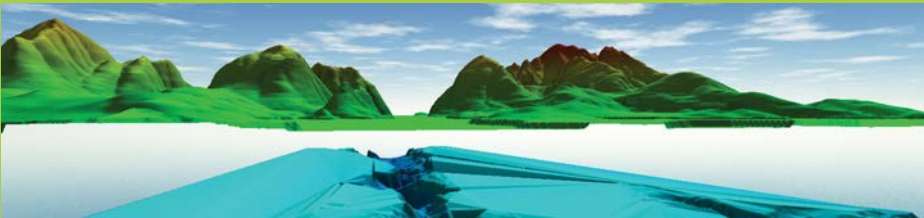
Global Mapper is capable of displaying, converting, and analyzing virtually any type of geospatial data whether 2D or 3D, cloud hosted or local, raster or vector, file-based or spatial database. The software converts, edits, publishes, prints, mosaics, tiles and allows users to conduct advanced spatial analysis including NDVI calculation, watershed and terrain analysis, volume calculations and much more.

BUILT-IN DATA ACCESS

Global Mapper supports over 250 geospatial data types and offers built-in WMS support for direct access to countless free online data servers providing imagery, topographic maps, and elevation datasets for the entire world.

3D RENDERING AND ELEVATION MODELING

Global Mapper's powerful 3D Viewer allows any 3D data, including LiDAR point clouds, digital elevation models, and 3D vector features to be rendered in stunning 3D. This customizable oblique view offers a truly realistic perspective within either a full-screen view or docked side-by-side with the corresponding 2D map. Capture the 3D view as an image file or as a fly-through video recording.



Display of multiple surfaces in the 3D View

POWERFUL LIDAR PROCESSING TOOLS

View and process LiDAR point clouds with a billion points or more. With dramatically fast processing and display speeds, Global Mapper quickly and easily creates accurate gridded surface models. For advanced point cloud analysis and feature extraction tools, check out the optional LiDAR Module.

ENERGY FEATURES

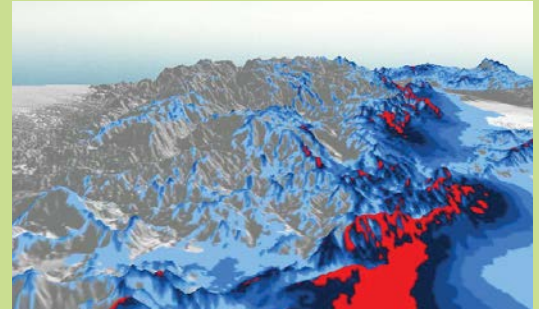
Global Mapper now includes all of the features and functions previously found in Global Energy Mapper, including oil and gas symbology, pad site templating, cut and fill optimization, volumetric calculation, and advanced geodetics, which is enabled with a local installation of Blue Marble's Geographic Calculator.

SCRIPTING AND BATCH PROCESSING

Most routine data processing functions in Global Mapper can be automated using simple, text-based scripts or using the built-in Batch Processing tool. Simulating interface-based workflows, these tools allow large volumes of data to be converted or reprojected quickly and easily.

SUPPORT FOR USER EXTENSIONS

Global Mapper's Software Developer Kit (SDK) allows software developers to integrate key components of the software into third party applications or to create custom toolbars and menu items to optimize the installed version of Global Mapper.



WHAT'S NEW

Updates and enhancements to Global Mapper are released frequently to ensure that users have immediate access to the latest tools with current versions of all common data formats. Among the recent additions to Global Mapper are:

- Complete interface redesign and overhaul with new toolbar buttons, dockable map windows, and improved layer management
- Dynamic rendering in the 3D View for displaying the entire extent of any 3D layer
- Significantly improved display and export speeds for most raster/terrain formats
- Powerful map layout functionality for creating high-quality printed maps or map books
- Perpendicular profiling tool for rendering a series of cross-sectional views of the terrain
- And much more

RESOURCES

- Free monthly webinars
- Training classes
- Getting Started guide
- Academic curriculums
- Social media user groups
- *public, online and custom*